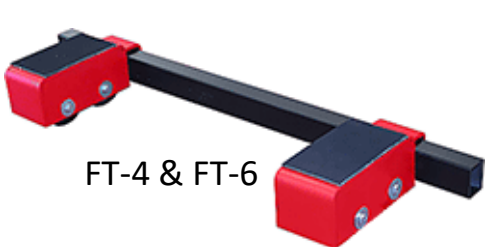


FIXED TRAVEL MACHINE SKATES

10 Year Warranty



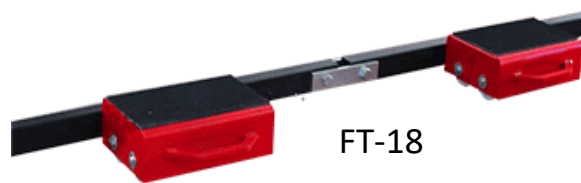
FT-4 & FT-6



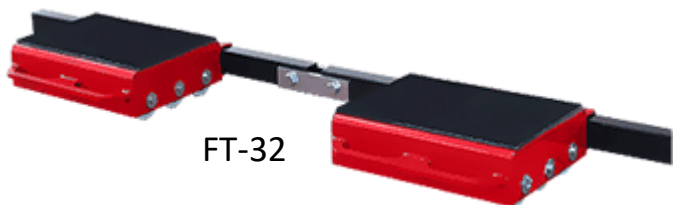
FT-8 & FT-12



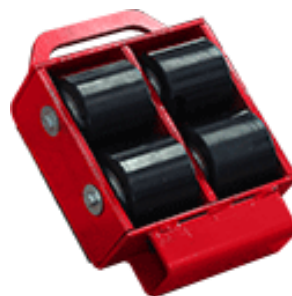
FT-24



FT-18



FT-32



Bottom Views



- **Made & Sold in Canton, Texas, USA**
- Adjustable alignment bar allows for setting incremental widths
- Alignment bar ensure even tracking when moving a heavy load
- Heavy duty struts between each roller ensure durability
- Friction pads grip and protect the load
- High quality, non-marking, non-damaging urethane rollers

Model	Price	Load Capacity	No. of Rollers	Roller Type	Adj. Width	Height	Pad Width	Pad Depth	Shipping Weight
FT-4	\$595	4 Tons	4	Standard	Up to 40 in.	4.25 in.	4 in.	7 in.	40 lbs.
FT-6	\$695	6 Tons	4	Heavy Duty	Up to 40 in.	4.25 in.	4 in.	7 in.	40 lbs.
FT-8	\$1050	8 Tons	8	Standard	Up to 80 in.	4.25 in.	8 in.	7 in.	80 lbs.
FT-12	\$1350	12 Tons	8	Heavy Duty	Up to 80 in.	4.25 in.	8 in.	7 in.	80 lbs.
FT-18	\$1695	18 Tons	12	Heavy Duty	Up to 85 in.	4.25 in.	12 in.	7 in.	115 lbs.
FT-24	\$2250	24 Tons	16	Heavy Duty	Up to 90 in.	4.25 in.	16 in.	7 in.	150 lbs.
FT-32	\$3295	32 Tons	24	Heavy Duty	Up to 90 in.	4.25 in.	16 in.	10.5 in.	200 lbs.